



Certificate of Analysis

Powered by Confident Cannabis

Open Book Extracts

Roxboro, NC 27573
 taylor@openbookextracts.com
 (727) 512-8686
 Lic. #

Sample: 2003DBL0369.4231

METRC Sample:
 Lot #: 200325-T4P-1

Strain: Tincture
 Ordered: 03/25/2020; Sampled: 03/27/2020; Completed: 03/31/2020

Tincture - peppermint - 400mg (14mg/g)

Ingestible, Tincture, Pressing



Pesticides



Microbials



Mycotoxins



Heavy Metals



Foreign Matter



Solvents

Terpenes

Analyzed by 300.13 GC/FID and GC/MS



0.819 mg/g
 Total Terpenes

Compound	LOQ mg/g	Mass mg/g	Mass %	Relative Concentration
Eucalyptol	0.082	0.385	0.0385	
δ-Limonene	0.082	0.188	0.0188	
β-Caryophyllene	0.082	0.148	0.0148	
β-Pinene	0.082	0.097	0.0097	
α-Bisabolol	0.082	<LOQ	<LOQ	
α-Humulene	0.082	<LOQ	<LOQ	
α-Pinene	0.082	<LOQ	<LOQ	
α-Terpinene	0.082	<LOQ	<LOQ	
β-Myrcene	0.082	<LOQ	<LOQ	
Camphene	0.082	<LOQ	<LOQ	
Caryophyllene Oxide	0.082	<LOQ	<LOQ	
cis-Nerolidol	0.053	<LOQ	<LOQ	
cis-Ocimene	0.053	<LOQ	<LOQ	
δ-3-Carene	0.082	<LOQ	<LOQ	
γ-Terpinene	0.082	<LOQ	<LOQ	
Guaiol	0.082	<LOQ	<LOQ	
Isopulegol	0.082	<LOQ	<LOQ	
Linalool	0.082	<LOQ	<LOQ	
p-Cymene	0.082	<LOQ	<LOQ	
Terpinolene	0.082	<LOQ	<LOQ	
trans-Nerolidol	0.029	<LOQ	<LOQ	
trans-Ocimene	0.029	<LOQ	<LOQ	

Cannabinoid Relative Concentration

Analyzed by 300.18 UHPLC/PDA

Pass

0.508 mg/g
 Δ9-THC + Δ8-THC

13.747 mg/g
 CBD

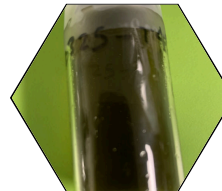
pH: NT
 Aw: 0.41

16.895 mg/g
 Total Cannabinoids

Not Tested
 Homogeneity

Compound	LOQ mg/g	Mass mg/g	Mass %	Relative Concentration
CBC	0.049	0.699	0.0699	
CBCa	0.049	0.056	0.0056	
CBD	0.049	13.747	1.3747	
CBDa	0.049	1.167	0.1167	
CBDV	0.049	0.290	0.0290	
CBDVa	0.049	<LOQ	<LOQ	
CBG	0.049	0.428	0.0428	
CBGa	0.049	<LOQ	<LOQ	
CBL	0.049	<LOQ	<LOQ	
CBN	0.049	<LOQ	<LOQ	
Δ8-THC	0.049	<LOQ	<LOQ	
Δ9-THC	0.049	0.508	0.0508	
THCa	0.049	<LOQ	<LOQ	
THCV	0.049	<LOQ	<LOQ	
THCVa	0.049	<LOQ	<LOQ	

Total THC = 0.877 x THC-A + Δ9-THC + Δ8-THC; Total CBD = CBDa * 0.877 + CBD



Stacy Gardalen

Stacy Gardalen
 Quality Control

Lucia Patarroyo

Lucia Patarroyo
 Analyst



4439 Polaris Ave
 Las Vegas, NV
 (702) 728-5180

www.dblabslv.com

This report is considered highly confidential and the sole property of the customer. DB Labs will not discuss any part of this study with personnel other than those authorized by the client. The results described in this report only apply to the samples analyzed. The reported result is based on a sample weight with the applicable moisture content for that sample. LOQ = Limit of Quantitation. Pesticide LOQ = Instrument Limit of Quantitation. NA = Not Analyzed. ND = Not Detected. NR = Not Reported. NT = Not Tested. PGR = Plant Growth Regulator. Unless otherwise stated all quality control samples performed within specifications established by the Laboratory. This product has been tested by DB Labs, LLC (MME# 61887736101164525768) using valid testing methodologies and a quality system as required by Nevada state law. Edibles are picked up prior to final packaging unless otherwise stated. Values reported relate only to the product tested. The uncertainty of measurement associated with the measurement result reported in this certificate is available from the organization upon request. DB Labs makes no claims as to the efficacy, safety or other risks associated with any detected or non-detected levels of any compounds reported herein. This Certificate shall not be reproduced except in full, without the written approval of DB Labs.



Certificate of Analysis

Powered by Confident Cannabis

Open Book Extracts

Roxboro, NC 27573
taylor@openbookextracts.com
(727) 512-8686
Lic. #

Sample: 2003DBL0369.4231

METRC Sample:
Lot #: 200325-T4P-1

Strain: Tincture

Ordered: 03/25/2020; Sampled: 03/27/2020; Completed: 03/31/2020

Tincture - peppermint - 400mg (14mg/g)

Ingestible, Tincture, Pressing



Pesticides		Not Tested		
Analyzed by 300.9 LC/MS/MS and GC/MS/MS				
Compound	LOQ	Limit	Mass	Status

Microbials		Pass		
Analyzed by 300.1 Plating/QPCR				
Quantitative Analysis	LOQ	Limit	Mass	Status
Aerobic Bacteria	CFU/g 1000	CFU/g 100000	CFU/g <LOQ	Pass
Bile-Tolerant Gram-Negative Bacteria	100	1000	<LOQ	Pass
Qualitative Analysis	Detected or Not Detected			Status
E. Coli	Not Detected			Pass
Salmonella	Not Detected			Pass

Mycotoxins		Not Tested		
Analyzed by 300.2 Elisa				
Mycotoxin	LOQ	Limit	Mass	Status

Heavy Metals		Not Tested		
Analyzed by 300.8 ICP/MS				
Element	LOQ	Limit	Mass	Status

Residual Solvents		Not Tested		
Analyzed by 300.13 GC/FID and GC/MS				
Compound	LOQ	Limit	Mass	Status



Stacy Gardalen

Stacy Gardalen
Quality Control

Lucia Patarroyo

Lucia Patarroyo
Analyst



4439 Polaris Ave
Las Vegas, NV
(702) 728-5180
www.dblabslv.com

This report is considered highly confidential and the sole property of the customer. DB Labs will not discuss any part of this study with personnel other than those authorized by the client. The results described in this report only apply to the samples analyzed. The reported result is based on a sample weight with the applicable moisture content for that sample. LOQ = Limit of Quantitation. Pesticide LOQ = Instrument Limit of Quantitation, NA = Not Analyzed, ND = Not Detected, NR = Not Reported, NT = Not Tested. PGR = Plant Growth Regulator. Unless otherwise stated all quality control samples performed within specifications established by the Laboratory. This product has been tested by DB Labs, LLC (MME# 61887736101164525768) using valid testing methodologies and a quality system as required by Nevada state law. Edibles are picked up prior to final packaging unless otherwise stated. Values reported relate only to the product tested. The uncertainty of measurement associated with the measurement result reported in this certificate is available from the organization upon request. DB Labs makes no claims as to the efficacy, safety or other risks associated with any detected or non-detected levels of any compounds reported herein. This Certificate shall not be reproduced except in full, without the written approval of DB Labs.